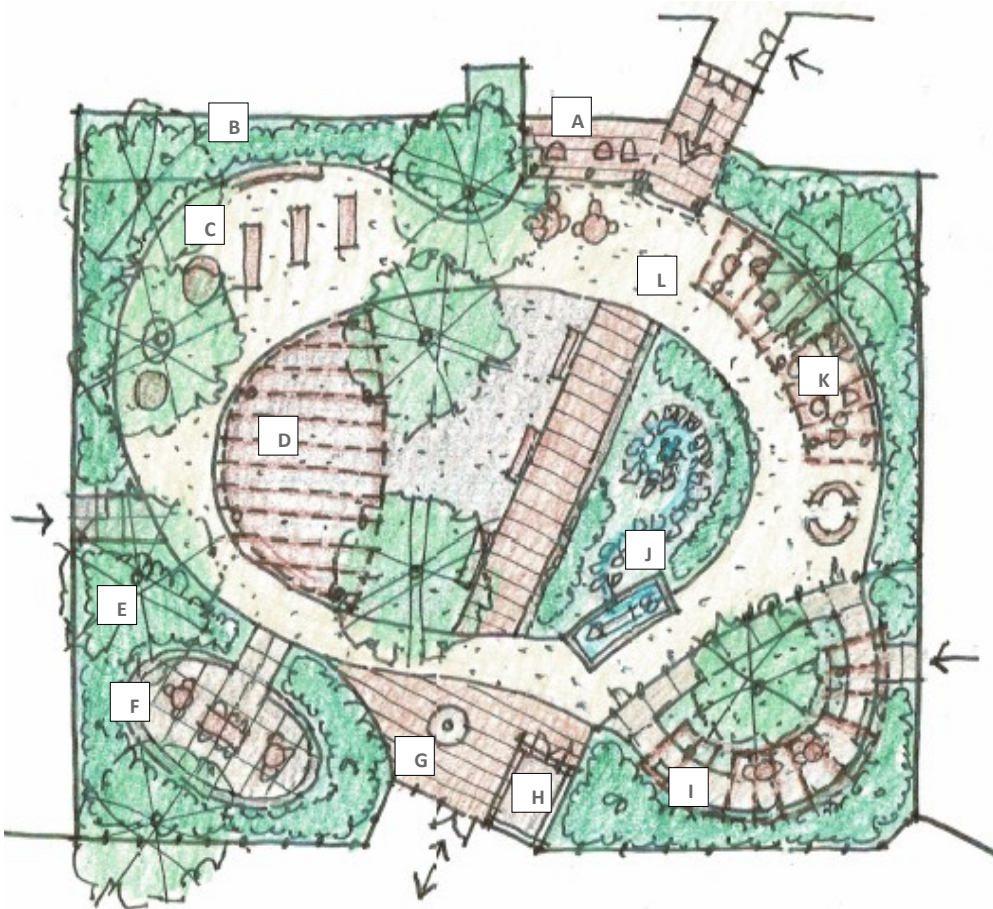


Our Vision for the Helen Porter Courtyard



- A) Porch with seating
- B) Perimeter gardens
- C) Rehabilitation area with planters
- D) Central island with covered roof for gathering
- E) Existing trees
- F) Staff area with seating
- G) Existing flagpole
- H) Storage shed
- I) Memory Care garden with covered pergola
- J) Existing water feature and new rock garden
- K) End-of-Life family space with covered pergola
- L) Accessible pathways with durable materials

About Helen Porter Rehabilitation and Nursing

Helen Porter Rehabilitation and Nursing, a component of Porter Medical Center, has 98 beds and serves as the only skilled nursing facility in Addison County.

Built adjacent to Porter Hospital in 1990, Helen Porter provides long-term care, memory care, short-term rehabilitation, palliative care and end-of-life care, all under one roof.

The original courtyard was dedicated in honor of the Veterans of Addison County in 1994.

THE
University of Vermont
HEALTH NETWORK
Porter Medical Center